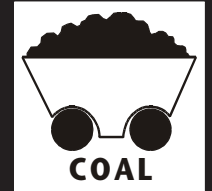


# THIS MINE OF MINE MINING FOR ENERGY



## A QUICK LOOK

Students build a plot of land with coal deposits, mine the coal, then reclaim the land and explore the uses of coal to produce energy.

## GRADE LEVEL

2-6



Teacher Guide  
Correlations to National  
Science Content Standards  
Student Guide  
Student Worksheet  
Student Review  
Evaluation Form

The NEED Project

PO Box 10101  
Manassas, VA 20108  
TEL: 800-875-5029  
FAX: 800-847-1820  
[www.NEED.org](http://www.NEED.org)

2003-2004

# Teacher Advisory Board

Linda Hutton, Educator, Kitty Hawk, NC  
Nancy Brock, Educator, Sugar Land, TX  
Carolyn Wuest, Educator, Pensacola, FL  
Nancy Stanley, Educator, Pensacola, FL  
Larry Richards, Educator, Eaton, IN  
Robin Thacker, Educator, Mayfield, KY  
Kim Jenkins, Educator, Cynthiana, KY  
Andra Russell, Educator, Portland, OR  
Amy Constant, Educator, Raleigh, NC  
Shelly Baumann, Educator, Rockford, MI  
Barbara Lazar, Educator, Albuquerque, NM  
Robert Lazar, Educator, Albuquerque, NM  
Scott Burch, Educator, New Albany, IN  
Linda Fonner, Educator, New Martinsville, WV  
Wayne Yonkelowitz, Educator, Fayetteville, WV  
Doris Tomas, Educator, Rosenberg, TX  
Melanie Harper, Educator, Odessa, TX  
Jim Grieshaber, Educator, Phoenix, AZ  
Scott Sutherland, Educator, Providence, RI  
Catherine Norris, Educator, Raleigh, NC  
Bob Thompson, Educator, Glen Ellyn, IL  
Constance Beatty, Educator, Kankakee, IL  
Joanne Spaziano, Educator, Cranston, RI  
Deborah Fitton, Cape Cod Cooperative Extension, Barnstable, MA  
Bob Stewart, Energy Consultant, Arlington, VA  
Blanche Sheinkopf, EnergySmart Schools, Indian Harbor, FL  
John Weiner, Energy Information Administration, U.S. Department of Energy

**NEED members may reproduce NEED materials for classroom use.**

# TABLE OF CONTENTS

National Science Education Content Standards .....	4
Teacher Guide .....	6
Student Guide .....	11
Coal Chain Activity .....	12
Review .....	13
Mining Transparency Master .....	14
Evaluation Form .....	15

*This Mine of Mine: Mining for Energy was developed by the Ohio Energy Project with funding from the Ohio Coal Development Office/Ohio Department of Development; and has been revised by and made available to educators nationwide through The NEED Project with permission.*



# Applicable Science Education Content Standards

## PRIMARY(GRADES K–4) STANDARD–D: EARTH AND SPACE SCIENCE

### 1. Properties of Earth Materials

- a. Earth materials are solid rocks and soils, water, and the gases of the atmosphere. The varied materials have different physical and chemical properties, which make them useful in different ways; for example, as building materials, as sources of fuel, or for growing the plants we use as food.
- b. Earth materials provide many of the resources that humans use.

## PRIMARY–F: SCIENCE IN PERSONAL AND SOCIAL PERSPECTIVES

### 3. Types of Resources

- a. Resources are things that we get from the living and nonliving environment to meet the needs and wants of a population.
- b. Some resources are basic materials, such as air, water, and soil; some are produced from basic resources, such as food, fuel, and building materials; and some resources are nonmaterial, such as quiet places, beauty, security, and safety.
- c. The supply of many resources is limited. If used, resources can be extended through recycling and decreased use.

### 4. Changes in Environments

- a. Environments are the space, conditions, and factors that affect an individual's and a population's ability to survive and their quality of life.
- b. Changes in environments can be natural or influenced by humans. Some changes are good, some are bad, and some are neither good nor bad.
- c. Pollution is a change in the environment that can influence the health, survival, or activities of organisms, including humans.
- d. Some environmental changes occur slowly, and others occur rapidly.

### 5. Science and Technology in Local Challenges

- a. People keep inventing new ways of doing things, solving problems, and getting work done. New ideas and inventions often affect other people; sometimes the effects are good and sometimes they are bad. It is helpful to try to determine in advance how ideas and inventions will affect other people.
- b. Science and technology have greatly improved food quality and quantity, transportation, health, sanitation, and communication. These benefits of science and technology are not available to all of the people in the world.

# Applicable Science Education Content Standards

## INTERMEDIATE (GRADES 5–8) STANDARD–B: PHYSICAL SCIENCE

### 3. Transfer of Energy

- a. Energy is a property of many substances and is associated with heat, light, electricity, mechanical motion, sound, nuclei, and the nature of a chemical.

## INTERMEDIATE–D: EARTH AND SPACE SCIENCE

### 1. Structure of the Earth System

- a. The solid earth is layered with a lithosphere; hot, convecting mantle; and dense, metallic core.

## INTERMEDIATE–E: SCIENCE AND TECHNOLOGY

### 2. Understandings about Science and Technology

- c. Technological solutions are temporary and have side effects. Technologies cost, carry risks, and have benefits.
- f. Perfectly designed solutions do not exist. All technological solutions have trade-offs, such as safety, cost, efficiency, and appearance. Risk is part of living in a highly technological world. Reducing risk often results in new technology.
- g. Technological designs have constraints. Some constraints are unavoidable, such as properties of materials, or effects of weather and friction. Other constraints limit choices in design, such as environmental protection, human safety, and aesthetics.

## INTERMEDIATE–F: SCIENCE IN PERSONAL AND SOCIAL PERSPECTIVES

### 1. Personal Health

- b. Natural environments may contain substances that are harmful to human beings. Maintaining environmental health involves establishing or monitoring quality standards related to use of soil, water, and air.

### 2. Populations, Resources, and Environments

- b. Causes of environmental degradation and resource depletion vary from region to region and from country to country.

### 3. Natural Hazards

- a. Internal and external processes of the earth system cause natural hazards, events that change or destroy human and wildlife habitats, damage property, and harm or kill humans.
- b. Human activities can induce hazards through resource acquisition, urban growth, land-use decisions, and waste disposal.
- c. Hazards can present personal and societal challenges because misidentifying the change or incorrectly estimating the rate and scale of change may result in either too little attention and significant human costs or too much cost for unneeded preventive measures.

### 4. Risks and Benefits

- c. Students can use a systematic approach to thinking critically about risks and benefits.
- d. Important personal and social decisions are made based on perceptions of benefits and risks.

*National Science Teachers Association*

# Teacher Guide

## GOAL

To explore coal mining, reclamation and uses through hands-on activities.

## INTRODUCTION

This activity allows students to explore the formation, geology, recovery, and uses of coal, as well as the reclamation of coal mine sites. Using sand, clay, soil, and rocks, students build a miniature plot of land containing coal deposits.

Students then learn about the surface mining method of recovering coal from the earth, and practice the method on their plot of land. After the coal is mined, students reclaim the plot of land, and discuss how the coal is transported and used.

## GRADE LEVEL

This activity is designed for students in grades 2-6.

## TIME NEEDED

Three class periods.

## MATERIALS NEEDED (30 STUDENTS)

- ◆ 36 small plastic bowls
- ◆ 36 clear straws
- ◆ 36 plastic spoons
- ◆ 24 large plastic bowls
- ◆ 5 lb. bag of sand
- ◆ 5 lb. bag of gray pebbles
- ◆ 5 lb. bag of white pebbles
- ◆ 5 lb. bag of topsoil
- ◆ 5 lbs. of clay
- ◆ 50-100 small pieces of coal, or small black pebbles representing coal
- ◆ 1 small container of grass seed
- ◆ newspaper to cover work areas
- ◆ grass, leaves, and twigs
- ◆ a container to represent a dump truck or coal car
- ◆ class set of **NEED Primary or Intermediate Energy Infobooks**

### *Optional:*

- ◆ *NEED's Primary Energy Stories and More, U.S. Energy Geography*
- ◆ *Coal poster and coal samples from the American Coal Foundation (202-466-8630)*

## PREPARATION

1. Make a transparency of the **Mining** master (page 14).
2. Make copies of the **Student Guide, Coal Chain, and Review** for each student (pages 11-13).
3. Set up five work stations so that students will have access to all materials.
4. Cover the student work areas with newspaper.
5. Place one large bowl each of sand, gray pebbles, white pebbles and topsoil at each station, as well as a portion of clay, a small bowl of coal, and a plastic spoon.

## PROCEDURE—DAY ONE

### Land Development

1. Have the students read the coal section of either the **Primary** or **Intermediate Energy Infobook** (depending on grade level). Discuss the formation of coal and its significance as an energy source in the United States, especially in the generation of electricity. (See *NEED's U.S. Energy Geography* for a transparency map of coal reserves in the United States.)
2. Review the following vocabulary words:

*coal: a black mineral that can be burned for energy*

*mine (verb): to remove natural resources from the ground by digging*

*surface mining: removing layers of earth to recover a natural resource*

*natural resource: something in nature that can be used to improve lives*

*reclamation: putting things back the way they were found*

3. Explain that the students will build their own plot of land that contains coal deposits.
4. Discuss how the earth is made of layers of different materials. (See *Geothermal section of infobook for diagram.*) In this activity, the layers are represented by sand, clay, soil and pebbles.
5. Provide each student with a small plastic bowl and a spoon and send them to the work stations.
6. Distribute the **Student Guides** and review them with the students as described below. The guides do not include the explanation of the correlations to geological layers as described below:
  - **Get a lump of clay about the size of a lemon.**
  - **Roll the clay flat and press it into the bottom of your container.**  
*This represents the clay layer in the earth.*
  - **Place one spoonful of coal on an area of the clay and flatten it.** (This coal layer should not be distributed evenly throughout the clay; it should take up only a small area of the clay.)  
*This represents a seam of coal on top of the clay layer.*

- Spread 6 spoonful of gray pebbles on top of the coal. Make a hill with the pebbles.

*This represents the shale that typically covers a layer of coal.*

- Spread 7 spoonful of white pebbles on top of the gray pebbles.

*This represents a layer of limestone.*

- Spread 8 spoonful of gray pebbles on top of the white pebbles.

*This represents another layer of shale.*

- Spread 10 spoonful of sand on top of the pebbles.

*This represents sandy, rocky soil.*

- Spread 12 spoonful of topsoil on top of the sand.

*This represents fertile topsoil.*

- Use cut grass, leaves, and twigs to make fields and forests on your plot of land.

7. After the students have finished their plots of land, have them clean up the work stations, put their names on their plots of land, and store them until tomorrow. The topsoil, grass seeds and spoons will be needed again.
8. Discuss how the earth is made of layers of different types of rocks, topsoil, clay and water. Some of these layers contain natural resources that we use for many different things. Have the students look at the geothermal section in the Infobooks to see the diagram of the earth's layers.

## PREPARATION—DAY TWO

1. Again cover the work stations with newspaper and put bowls of topsoil and grass seed at each station. Place clear drinking straws and spoons at each station, also.

## PROCEDURE—DAY TWO

### Geology and Mining

1. Discuss with the students things they use that are made from natural resources found underground, such as:

pencils made from graphite

jewelry made from gold, silver, gemstones

plastic items made from petroleum

nylon and polyester clothes made from petroleum

anything metal

coal used to generate electricity

natural gas, petroleum and uranium used to generate electricity

steam from geysers—geothermal energy

2. Discuss how we remove coal and other natural resources buried in the earth, using the mining transparency.
3. Make a KWL chart about mining. On a chart or chalkboard, draw a table with three columns. Label the columns K, W, and L.

**The K stands for Know. Ask what the students know about mining, and record their responses in the K column.**

**The W stands for Want to Know. Ask what the students want to know about mining, and record the responses in the W column. Tell the students they can add to this column at any time.**

**The L stands for Learn. Leave the L column blank. The students will add to this column during and after the activity.**

4. Have students retrieve their plots of land and spoons and return to the work stations. Explain that they will be mining the coal from their plots of land.
5. Instruct the students to take core samples of their plots, using drinking straws to carefully probe the soil. Explain how to cover the end of the straw with a finger and carefully remove the straw to look at its contents.
6. The students must use their spoons to carefully remove each layer of grass, sand, and pebbles, placing each layer in a separate pile on the newspaper. This simulates the use of bulldozers and other machines to move layers of earth.
7. When the coal layer is reached, the spoons should be used to remove the coal. Have the students place the coal in the coal receptacle you designate.
8. When the mining is complete, discuss with the students what they have learned in the mining process. Have students add to the W and L columns on the KWL chart.

## Reclamation

1. Discuss with the students whether they should leave the plots of land as they are. Introduce the concept of reclamation. By law, real mine sites must be restored so that they are as much as possible like they were before the mining.
2. Direct the students to reclaim their plots of land. They should replace all of the layers so that they are the same as they were before the land was mined, except for the grass, leaves and twigs, which must be thrown away because they are dead. New growing things must be planted.
3. When they have replaced the dirt layer, have them sprinkle two pinches of grass seed onto the soil, then put another handful of soil on top of the seeds. Have them water the soil and place the plots of land in a sunny area.
4. After the work stations have been cleaned, bring the class together to discuss the reclamation process and add to the KWL chart. Lead the discussion by asking the following questions:

**Was it easy to replace each layer exactly as it was? *Reclamation is difficult and expensive. Imagine if the plots of land in our experiment were as big as our playground! It would take time and effort to replace the land.***

**Why is it important to reclaim mined land?** *The resources we get from the earth are important to our lives. The environment that surrounds and covers those resources is equally important. It is our responsibility to return the land to a state that is as good as, or better than, it was before we removed the resources.*

**What happens when land is not reclaimed?** *What did our room look like right after we had mined our coal? It was a mess! We couldn't use it for the things we needed to do in our room. We needed to clean it up so that it was useful to us again. It is important to respect the earth. Land that is not reclaimed ends up being an empty pit. It is ugly and can't be used. Reclaimed land can be used for farmland, camping, lakes, planting trees, livestock grazing, homes, golf courses, and many other things.*

**Could you plant trees and build homes on the site as soon as the earth is reclaimed?** *It depends on many factors. The depth of the mine, the weather and the type of soil in the mine can affect how long it takes before the land to be used for planting trees and building safe structures.*

## PROCEDURE—DAY THREE

1. Have the students add to the W and L columns of the KWL chart the things they learned about reclamation in yesterday's activity, and things the activity made them want to know more about.
2. Discuss and/or demonstrate what happens to coal after it is mined: The coal is transported by train, barge or truck to the power plant; the coal is cleaned of impurities; the coal is burned in the boiler of the power plant; the heat from the burning coal is used to heat water into steam; the steam rushes through a pipe and spins a turbine; the turbine is connected to a generator that produces electricity; the electricity travels by power lines to businesses and homes.
3. Have the students complete the **Coal Chain** activity.
4. Use *A Cool Coal Story* in NEED's **Primary Energy Stories and More** to have students act out the formation and mining of coal, and its use to generate electricity.
5. Review the KWL chart and have students complete the **Review**.
6. Evaluate the activity with the students using the **Evaluation Form** (page 15), and mail or fax the evaluation to NEED.

## Extensions:

1. Invite a representative from a local coal company or electric utility to the classroom to discuss the coal industry and help the students answer more of the W questions on the KWL chart.
2. Have the students precisely measure all of the materials used in their plots of land by weight or volume, or both, and record the data before and after the activity.
3. The following children's books are about coal: *In Coal Country* by Judith Hendershot, Dragonfly Books, 1987, and *Mama Was A Miner*, by George Ella Lyon, Orchard Books, 1994.

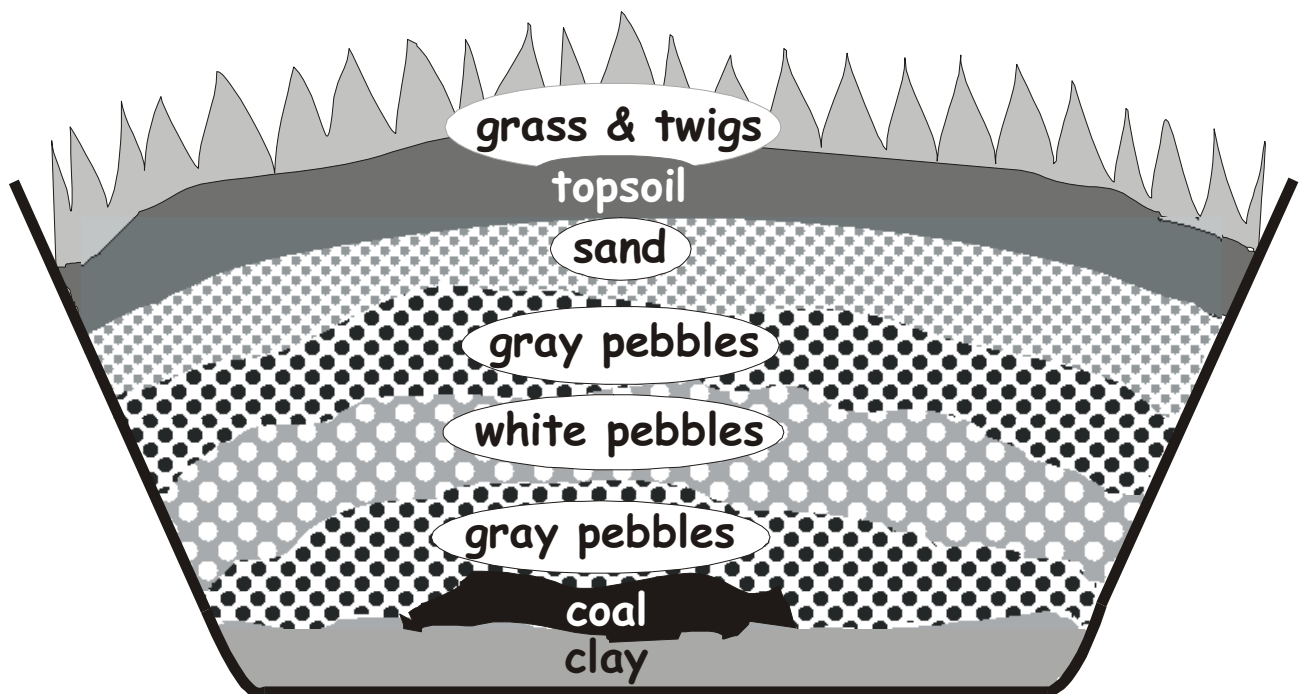
# STUDENT GUIDE

## THIS MINE OF MINE

Follow these steps to build your plot of land. Check off each step in the box on the left as you do it.

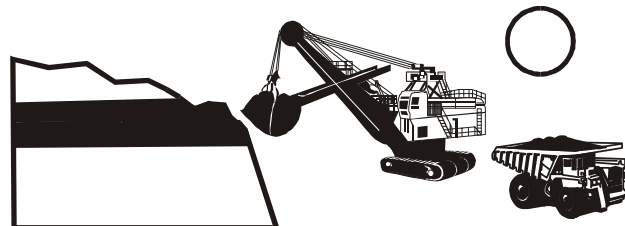
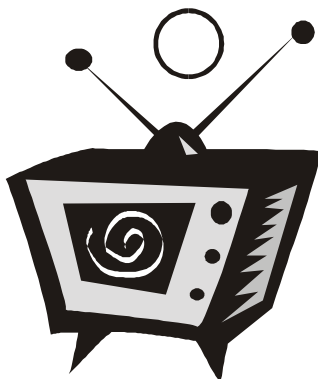
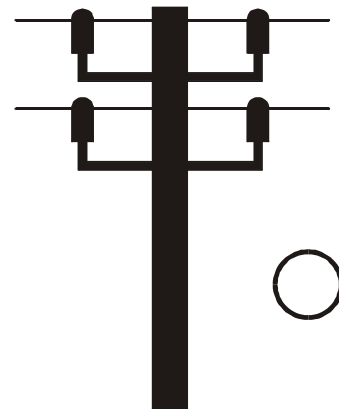
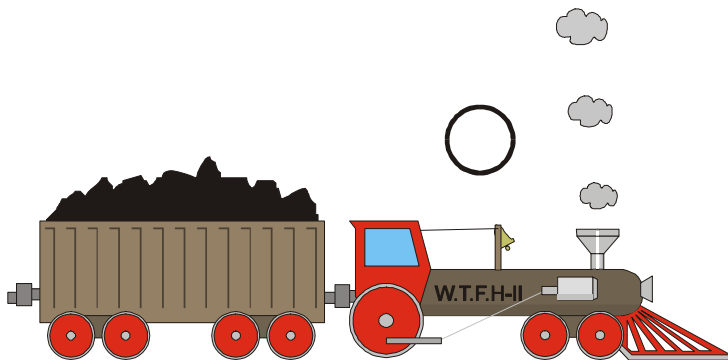
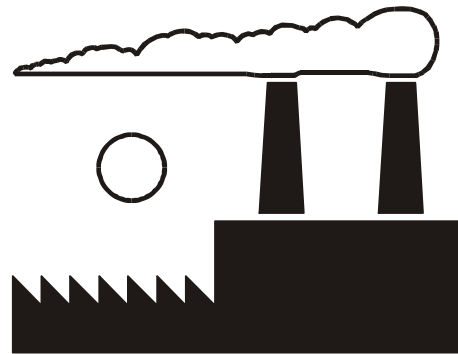
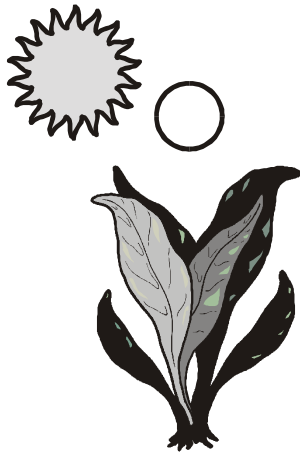
- Get a lump of clay about the size of a lemon.
- Flatten the clay into the bottom of your container.
- Put 1 spoonful of coal in any area of the clay and spread it flat.
- Spread 6 spoonful of gray pebbles over the coal, making a small hill.
- Spread 7 spoonful of white pebbles evenly into the container.
- Spread 8 spoonful of gray pebbles evenly into the container.
- Spread 10 spoonful of sand evenly into the container.
- Spread 12 spoonful of topsoil evenly into the container.
- Use cut grass, leaves and twigs to make fields and forests on the top.

This is what your plot of land should look like:



# COAL CHAIN THIS MINE OF MINE

Number the circles from 1 to 6 to show the chain of coal from its formation to its use in your home. On the back of the page, write a sentence to explain each number.





REVIEW  
THIS MINE OF MINE

Answer each question with a complete sentence.

1. What is a natural resource?

---

---

2. Why is coal a natural resource?

---

---

3. How was coal formed?

---

---

4. Where do we find coal?

---

---

5. How do we get coal?

---

---

6. Why is it important to reclaim land after it is mined?

---

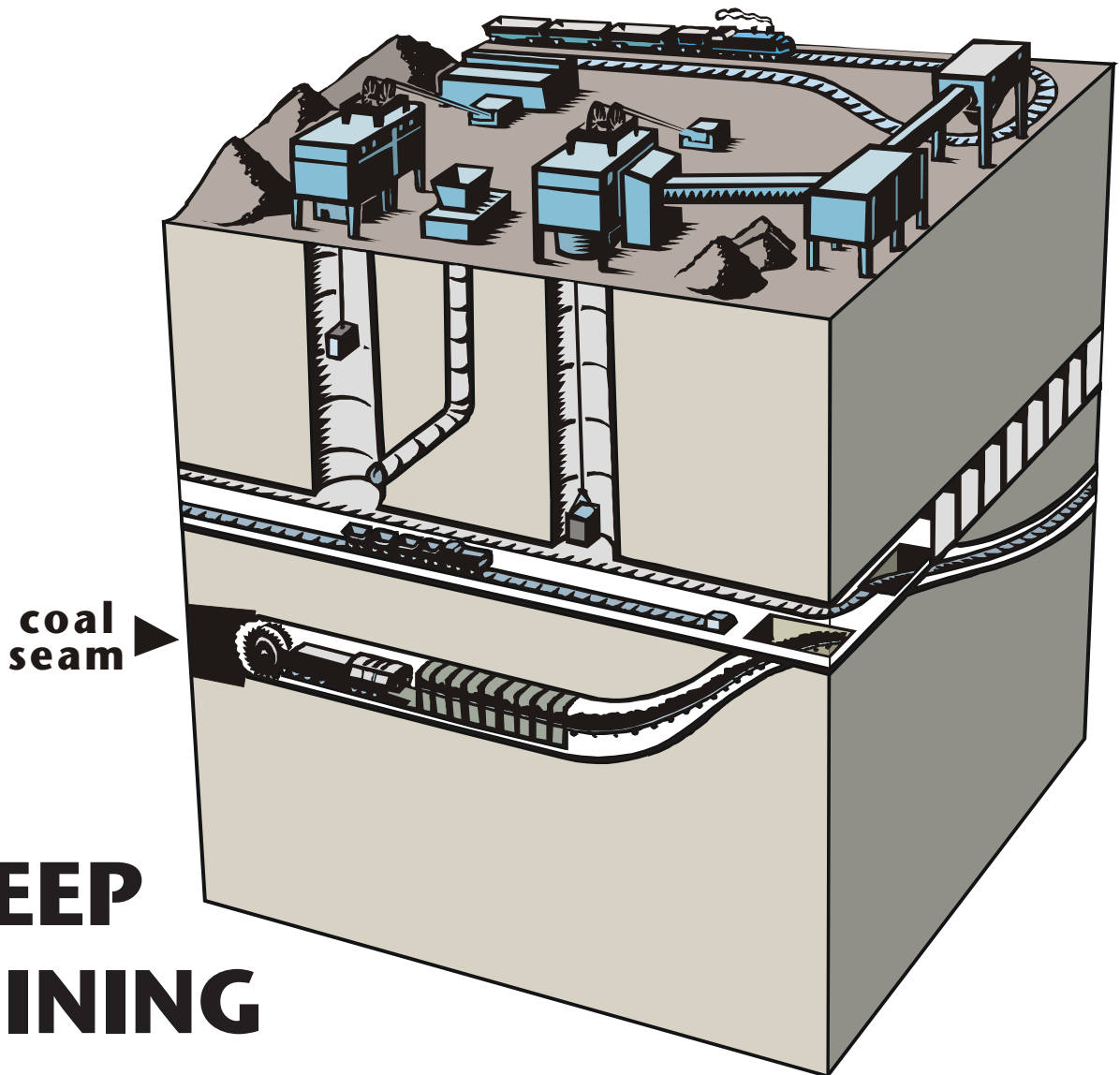
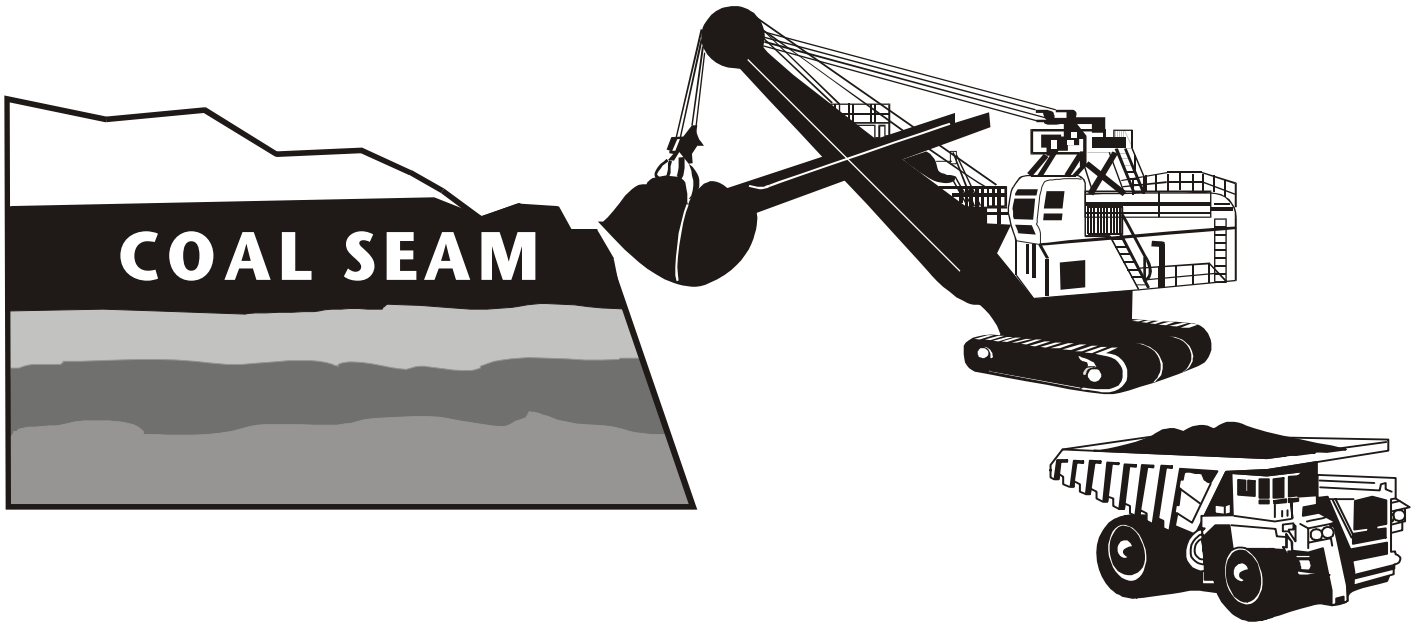
---

7. How do we use the energy in coal?

---

---

# SURFACE MINING



# DEEP MINING

# THIS MINE IS MINE

## Evaluation Form

State: \_\_\_\_\_ Grade Level: \_\_\_\_\_ Number of Students: \_\_\_\_\_

- |  |     |    |
|--|-----|----|
| 1. Did you conduct all of the activity?                            | Yes | No |
| 2. Were the instructions clear and easy to follow?                 | Yes | No |
| 3. Did the activity meet your academic objectives?                 | Yes | No |
| 4. Was the activity age-appropriate?                               | Yes | No |
| 5. Was the allotted time sufficient to conduct the activity?       | Yes | No |
| 6. Was the activity easy to conduct?                               | Yes | No |
| 7. Was the preparation time/materials acceptable for the activity? | Yes | No |
| 8. Were the students interested and motivated?                     | Yes | No |
| 9. Would you use the activity again?                               | Yes | No |

How would you rate the activity overall (excellent, good, fair, poor)?

How would your students rate the activity overall (excellent, good, fair, poor)?

Would you have purchased the materials from NEED if they had been available in kit form?

What would make the activity more useful to you?

Other Comments:

**Please fax or mail to:  
NEED Project  
PO Box 10101  
Manassas, VA 20108  
F: 1-800-847-1820**

# NEED National Sponsors and Partners

Alabama Department of Economic and Community Affairs  
Albuquerque Public Schools - NM  
American Association of Drilling Engineers - Houston Chapter  
American Electric Power  
American Petroleum Institute - Houston Chapter  
Association of Desk & Derrick Clubs  
BP  
Bechtel Jacobs  
Cape Cod Cooperative Extension  
Cape Light Compact  
Chapel Hill Public Schools - NC  
Charlotte-Mecklenburg Public Schools - NC  
ChevronTexaco  
Cinergy Corporation  
Connecticut Energy Council for Teachers  
Cypress-Fairbanks Independent School District - TX  
Dart Container Corporation Foundation  
Devon Energy  
Dominion  
Duke Energy  
Energy Information Administration - U.S. Department of Energy  
Equitable Resources  
Ford Motor Company Foundation  
Global Santa Fe  
Halliburton Foundation  
Henrico County Schools - VA  
Hydro Research Foundation  
Illinois Department of Commerce and Economic Opportunity  
Independent Oil and Gas Association of WV  
Independent Petroleum Association of NM  
Indiana Division of Family & Children, Housing and Community Services  
Indiana Department of Commerce - Energy Policy Division  
Indiana Community Action Association  
Interstate Renewable Energy Council  
Johnson Controls  
Kentucky Clean Fuels Coalition  
Kentucky Coal Council  
Kentucky Division of Energy  
Kentucky Oil and Gas Association  
Kentucky River Properties LLC  
Llano Land and Exploration  
Maine Energy Education Project  
Maine Public Service Company  
Marathon Oil Company  
Michigan Oil and Gas Association  
Minerals Management Service - U. S. Department of the Interior  
Mississippi Development Authority - Energy Division  
Narragansett Electric - A National Grid Company  
National Association of State Energy Officials  
National Ocean Industries Association  
National Renewable Energy Laboratory  
Nebraska Public Power District  
New Hanover County Schools - NC  
New Mexico Oil and Gas Association  
NC Department of Administration - State Energy Office  
Offshore Energy Center/Ocean Star/OEC Society  
Ohio Energy Project  
PG & E National Energy Group\*  
Paragon Engineering  
Parkway School District - MO  
Permian Basin Petroleum Association  
Propane Education & Research Council  
Roanoke Gas  
Rhode Island State Energy Office  
Saudi Aramco Foundation  
Schlumberger  
Shell Exploration and Production  
South Carolina Energy Office  
South Carolina Department of Health and Environmental Control  
South Carolina Gas and Electric  
Southwest Gas  
Spring Branch ISD - TX  
Tennessee Department of Economic and Community Development  
TEED Project  
Texas Alliance of Energy Producers  
Texas Independent Producers & Royalty Owners Association  
Union County Public Schools - NC  
Union Light, Heat & Power  
U.S. Department of Energy  
USX Foundation  
Venoco Inc.  
Virgin Islands Energy Office  
Wake County EnergySavers & Wake County Public Schools - NC  
Weatherford  
Woodford County Schools - KY  
Xcel Energy

\*PG&E National Energy Group and any other company referenced herein that uses the PG&E name or logo are not the same company as Pacific Gas and Electric Company, the regulated California utility. Neither PG&E National Energy Group nor these other referenced companies are regulated by the California Public Utilities Commission. Customers of Pacific Gas and Electric Company do not have to buy products from these companies in order to continue to receive quality regulated services from the utility.